

ADVISORY COMMITTEE

AGENDA

For the meeting of the Advisory Committee Members of
Nelson Marlborough Health held on
Tuesday 26 May 2020 at 10.00am

Zoom meeting

Section	Agenda Item	Time	Attached	Action
1	Welcome, Karakia, Apologies, Registration of Interests	10.00am	Attached	Resolution
2	Confirmation of previous Meeting Minutes		Attached	Resolution
2.1	Action Points		Attached	Note
3	GM Report	10.05am	Attached	Resolution
3.1	Dashboard		Attached	Note
4	For Information: Submissions		Attached	Note
5	Glossary		Attached	Note
	Meeting finish	10.15am		

PUBLIC EXCLUDED MEETING

10.15am

Resolution to exclude public

RECOMMENDATION

THAT the Board resolve itself into a Committee of the whole and that in terms of the NZ Public Health & Disability Act 2000, the public be excluded while the following items are considered:

- **Minutes of a meeting of Advisory Committee members held on 24 March 2020 (Clause 32(e) Third Schedule NZ Public Health & Disability Act 2000)**
- **Discussion Items – To protect information that is subject to negotiation (Clauses 32(a) and (b) Third Schedule NZ Public Health & Disability Act 2000)**

WELCOME, KARAKIA AND APOLOGIES

Apologies

REGISTRATIONS OF INTEREST – BOARD MEMBERS

Name	Existing – Health	Existing – Other	Interest Relates To	Possible Future Conflicts
Jenny Black (Chair)	<ul style="list-style-type: none"> ▪ Chair of South Island Alliance Board ▪ Chair of National Chairs ▪ Member of West Coast Partnership Group ▪ Member Health Promotion Agency (HPA) 			
Craig Dennis (Deputy Chair)		<ul style="list-style-type: none"> ▪ Director, Taylors Contracting Co Ltd ▪ Director of CD & Associates Ltd ▪ Director of KHC Dennis Enterprises Ltd ▪ Director of 295 Trafalgar Street Ltd ▪ Director of Scott Syndicate Development Company Ltd ▪ Chair of Progress Nelson Tasman 		

Name	Existing – Health	Existing – Other	Interest Relates To	Possible Future Conflicts
Gerald Hope		<ul style="list-style-type: none"> ▪ CE Marlborough Research Centre ▪ Director Maryport Investments Ltd ▪ CE at MRC landlord to Hill laboratory services Blenheim ▪ Councillor Marlborough District Council (Wairau Awatere Ward) 	<ul style="list-style-type: none"> ▪ Landlord to Hills Laboratory Services Blenheim 	
Brigid Forrest	<ul style="list-style-type: none"> ▪ Doctor at Hospice Marlborough (employed by Salvation Army) ▪ Locum GP Marlborough (not a member of PHO) ▪ Daughter in Law employed by Nelson Bays Primary Health as a Community Dietitian 	<ul style="list-style-type: none"> ▪ Small Shareholder and director on the Board of Marlborough Vintners Hotel ▪ Joint owner of Forrest Wines Ltd 	<ul style="list-style-type: none"> ▪ Functions and meetings held for NMDHB 	
Dawn McConnell	<ul style="list-style-type: none"> ▪ Te Atiawa representative and Chair of Iwi Health Board ▪ Director Te Hauora O Ngati Rarua 	<ul style="list-style-type: none"> ▪ Trustee, Waikawa Marae ▪ Regional Iwi representative, Internal Affairs 	<ul style="list-style-type: none"> ▪ MOH contract 	

Name	Existing – Health	Existing – Other	Interest Relates To	Possible Future Conflicts
Allan Panting	<ul style="list-style-type: none"> ▪ Chair General Surgery Prioritisation Working Group ▪ Chair Ophthalmology Service Improvement Advisory Group ▪ Chair Maternal Foetal Medicine Service Improvement Advisory Group ▪ Chair National Orthopaedic Sector Group 			
Stephen Vallance	<ul style="list-style-type: none"> ▪ Chairman, Crossroads Trust Marlborough 			
Jacinta Newport	<ul style="list-style-type: none"> ▪ 			
Paul Matheson	<ul style="list-style-type: none"> ▪ Board member Nelson/Tasman Cancer Society 	<ul style="list-style-type: none"> ▪ Trustee Te Matau Marine Centre ▪ Chair of Top of the South Regional Committee of the NZ Community Trust ▪ Justice of the Peace 		
Jill Kersey	<ul style="list-style-type: none"> ▪ Board member Nelson Brain Injury Association 		<ul style="list-style-type: none"> ▪ Funding from NMDHB 	
Olivia Hall	<ul style="list-style-type: none"> ▪ Chair of parent organisation of Te Hauora o Ngati Rarua 	<ul style="list-style-type: none"> ▪ Employee at NMIT ▪ Chair of Te Runanga o Ngati Rarua ▪ Board member Nelson College ▪ Chair Tasman Bays Heritage Trust (Nelson Provincial Museum) 	Provider for potential contracts	

As at January 2020

Registrations of Interest

REGISTRATIONS OF INTEREST – EXECUTIVE LEADERSHIP TEAM MEMBERS

Name	Title	Existing – Health	Existing – Other	Interest Relates To	Possible Future Conflicts
CLINICAL SERVICES					
Lexie O’Shea	GM Clinical Services				
Pam Kiesanowski	Director of Nursing & Midwifery	<ul style="list-style-type: none"> ▪ Chair SI NENZ Group 			
Elizabeth Wood, Dr	Clinical Director Community / Chair Clinical Governance Committee	<ul style="list-style-type: none"> ▪ General Practitioner Mapua Health Centre ▪ Chair NMDHB Clinical Governance Committee ▪ MCNZ Performance Assessment Committee Member 			
Nick Baker, Dr	Chief Medical Officer	<ul style="list-style-type: none"> ▪ Senior Clinical Lecturer, Community Child Health, University of Otago Wellington School of Medicine ▪ Member Steering Group NZ Child and Youth Epidemiology Service (previously Chair of and co-founder of the service) ▪ Member of Paediatric Society of NZ ▪ Fellow Royal Australasian College of Physicians ▪ Occasional Expert Witness Work – Ministry of Justice ▪ Technical Expert DHB Accreditation – MOH ▪ Occasional external contractor work for SI Health Alliance teaching on safe sleep 	<ul style="list-style-type: none"> ▪ Wife is a graphic artist who does some health related work 		

Name	Title	Existing – Health	Existing – Other	Interest Relates To	Possible Future Conflicts
		<ul style="list-style-type: none"> ▪ Chair National CMO Group ▪ Co-ordinator SI CMO Group ▪ Member SI Quality Alliance Group – SIAPO ▪ Associate Fellow of Royal Australasian College of Medical Administrators ▪ Fellow of the Royal Meteorological Society ▪ Member of NZ Digital Investment Board Ministry of Health ▪ External Clinical Incident Review Governance Group - ACC 			
Hilary Exton	Director of Allied Health	<ul style="list-style-type: none"> ▪ Member of the Nelson Marlborough Cardiology Trust ▪ Member of Physiotherapy New Zealand ▪ Member of the New Zealand DHB Physiotherapy Leaders group ▪ Member of the New Zealand Paediatric Group ▪ Chair of South Island Directors of Allied Health ▪ President of the Nelson Marlborough Physiotherapy Branch ▪ Deputy Chair National Directors of Allied Health ▪ Acting Chief Allied Health Professions Officer MOH (secondment) 			

Name	Title	Existing – Health	Existing – Other	Interest Relates To	Possible Future Conflicts
MENTAL HEALTH SERVICES					
Jane Kinsey	GM Mental Health Addictions & DSS	<ul style="list-style-type: none"> ▪ Husband works for NMDHB in AT&R as a Physiotherapist. ▪ Son employed short term contract as data entry 	<ul style="list-style-type: none"> ▪ Board member Distance Running Academy 		
CORPORATE SUPPORT					
Trish Casey	GM People & Capability	<ul style="list-style-type: none"> ▪ Husband is shift manager for St John Ambulance 	<ul style="list-style-type: none"> ▪ Trustee of the Empowerment Trust 		
Kirsty Martin	GM IT				
Eric Sinclair	GM Finance & Performance Facilities	<ul style="list-style-type: none"> ▪ Trustee of Golden Bay Community Health Trust ▪ Member of National Food Services Agreement Contract Management Group for Health Partnerships ▪ Wife is a Registered Nurse working for a number of GPs on a casual basis 			
Cathy O'Malley	GM Strategy Primary & Community	<ul style="list-style-type: none"> ▪ Daughter employed by Pharmacy Department in the casual pool ▪ Sister is employed by Marlborough PHO as Healthcare Home Facilitator 	<ul style="list-style-type: none"> ▪ Daughter is involved in sustainability matters 		

Name	Title	Existing – Health	Existing – Other	Interest To	Relates	Possible Future Conflicts
Ditre Tamatea	GM Maori Health & Vulnerable Populations	<ul style="list-style-type: none"> ▪ Te Herenga Hauora (GM Maori Health South Island) ▪ Member of Te Tumu Whakarae (GM Maori Health National Collective) ▪ Partner is a Doctor obstetric and gynaecological consultant ▪ Member of the South Island Child Health Alliance Te Herenga Hauora representative to the South Island Programme Alliance Integration Team (SPAIT) 	<ul style="list-style-type: none"> ▪ Both myself and my partner own shares in various Maori land incorporations 			
CHIEF EXECUTIVE'S OFFICE						
Peter Bramley, Dr	Chief Executive	<ul style="list-style-type: none"> ▪ DHB representative on the PHARMAC Board ▪ National CE Lead for Joint Procurement Agency ▪ National CE Lead for RMO ▪ National CE Lead for Mental Health ▪ Board Member of Health Roundtable Board ▪ Trustee of Churchill Hospital ▪ Daughter employed as RN for NMDHB 	<ul style="list-style-type: none"> ▪ Son-in-law employed by Duncan Cotterill 			
Gaylene Corlett	EA to CE	<ul style="list-style-type: none"> • Brother works at NMDHB in the Transport Department 				

As at May 2020

MINUTES OF MEETING

MINUTES OF A MEETING OF THE ADVISORY COMMITTEE OF NELSON MARLBOROUGH HEALTH HELD VIA ZOOM ON TUESDAY 24 MARCH 2020 AT 10.00AM

Present:

Jenny Black (Chair), Craig Dennis, Gerald Hope, Stephen Vallance, Allan Panting, Brigid Forrest, Dawn McConnell, Jill Kersey, Jacinta Newport, Olivia Hall, Paul Matheson

In Attendance:

Peter Bramley (CEO), Eric Sinclair (GM Finance Performance & Facilities), Nick Baker (Chief Medical Officer), Gaylene Corlett (Board Secretary)

Apologies:

Nil

Karakia:

Dawn McConnell

SECTION 1: APOLOGIES AND REGISTRATIONS OF INTEREST

Moved: Brigid Forrest

Seconded: Gerald Hope

RECOMMENDATION:

THAT THE APOLOGIES AND REGISTRATIONS OF INTEREST BE NOTED.

AGREED

SECTION 2: MINUTES OF PREVIOUS MEETING AND CORRESPONDENCE

2.1 Minutes of Previous Meeting

Moved: Brigid Forrest

Seconded: Gerald Hope

RECOMMENDATION:

THAT THE MINUTES OF THE ADVISORY COMMITTEE MEETING HELD ON 24 SEPTEMBER 2019 BE ADOPTED AS A TRUE AND CORRECT RECORD ONCE AMENDMED.

AGREED

SECTION 3: ACTION POINTS

Item 1 – Medication Discussion Point: Deferred

Item 2 – Improving Patient Flow: Deferred

Matters Arising

Nil

SECTION 4: GM REPORT

Nil.

Meeting closed at: 10.15am

ACTION POINTS – NMDHB – ADVISORY COMMITTEE Open Meeting
Held on 24 March 2020

Action Item #	Action Discussed	Action Requested	Person Responsible	Meeting Raised In	Due Date	Status
1	Dashboard: Pharmaceuticals	Suggested to have medications (across all services) as a discussion topic at a future CPHAC meeting	Cathy O'Malley/ Peter Bramley	22 May 2018	Deferred	
2	GM's Report	Provide the list of projects on improving patient flow (ideas gathered from MOH visit)	Lexie O'Shea	27 August 2019	Deferred	

MEMO

To: Advisory Committee Members
From: Cathy O'Malley, GM Strategy Primary & Community
Date: 20 May 2020
Subject: **General Manager's Report**

Status

This report contains:

- For decision
- Update
- Regular report
- For information

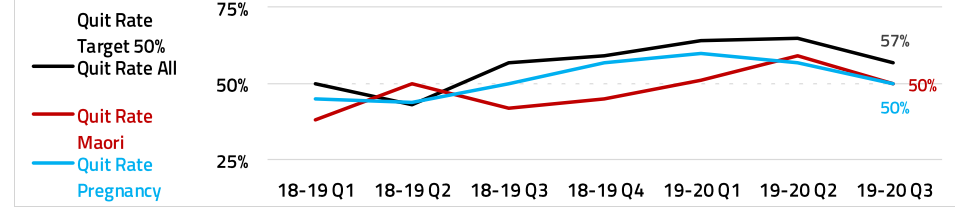
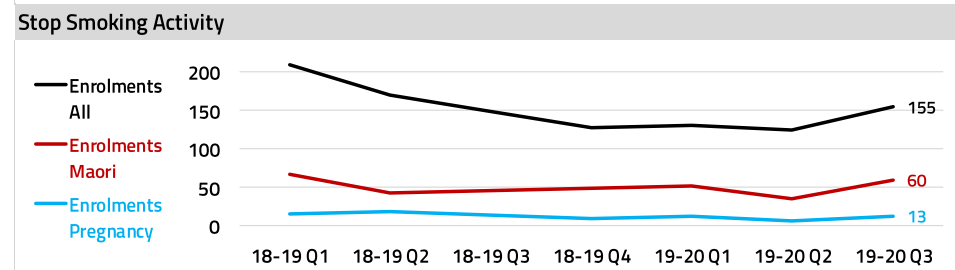
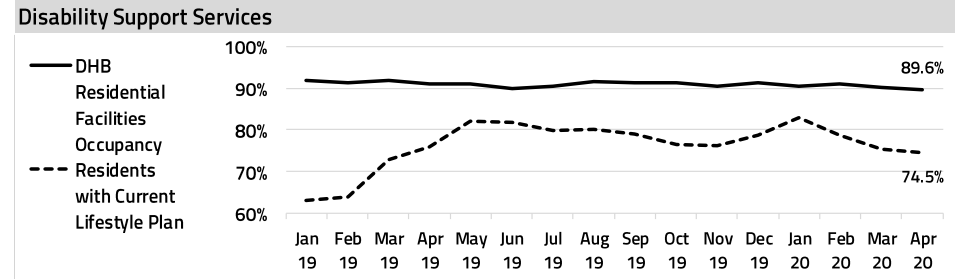
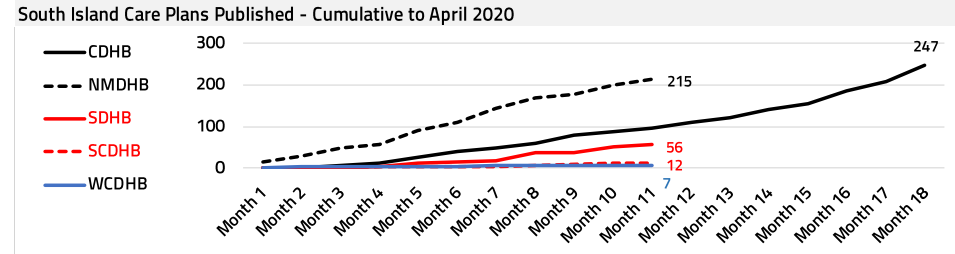
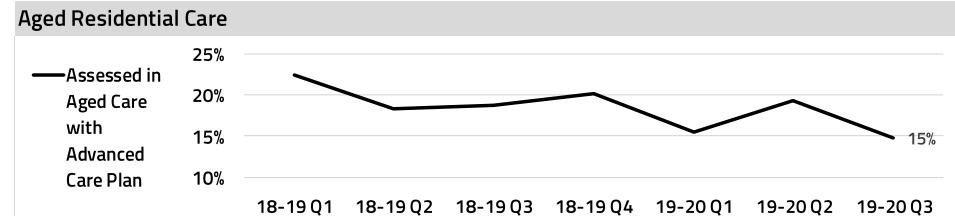
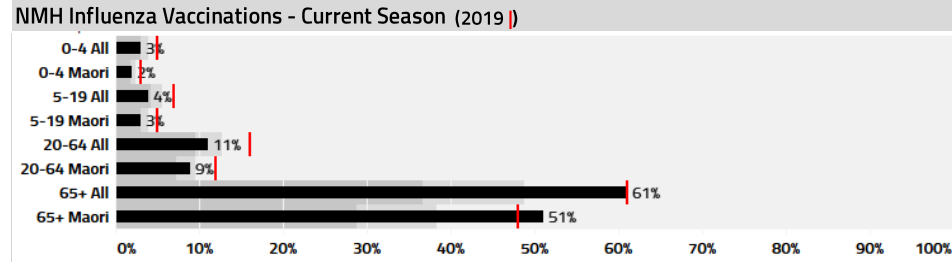
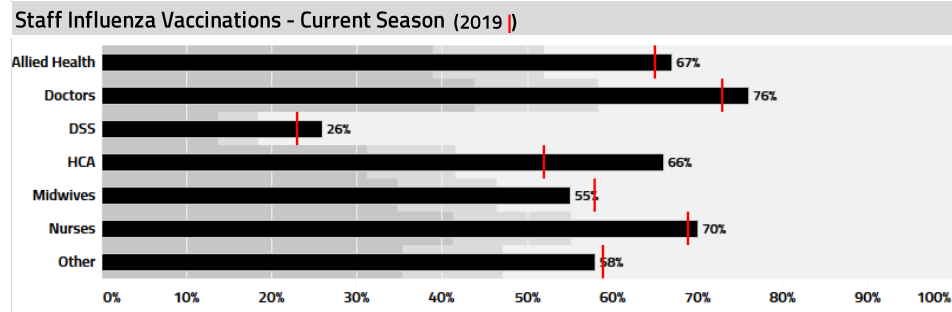
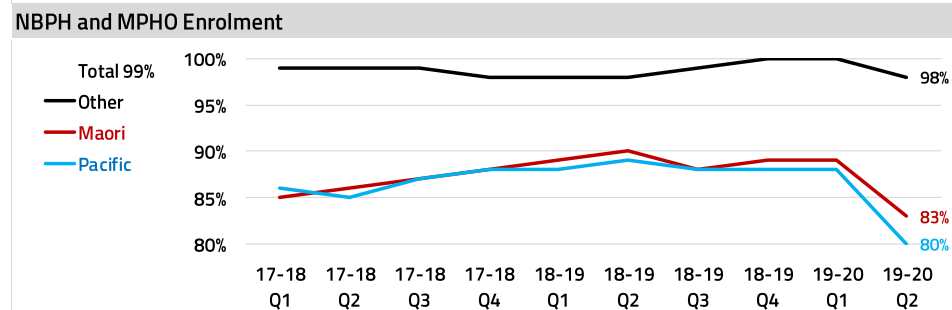
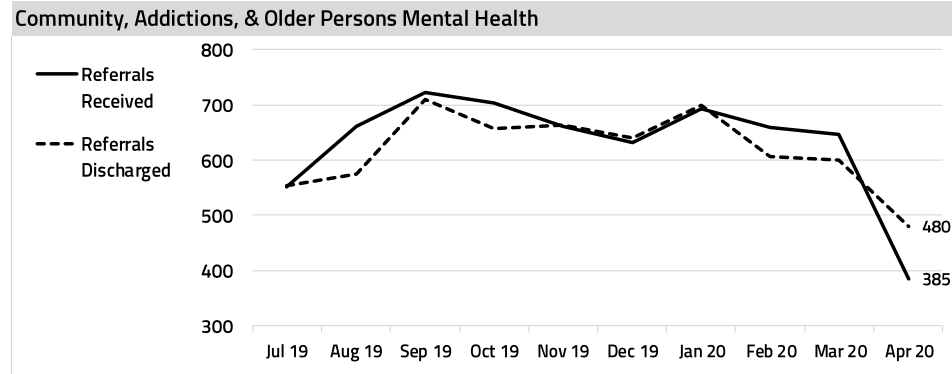
Dashboard

The dashboard is attached as item 3.1

Cathy O'Malley
General Manager Strategy, Primary & Community

RECOMMENDATION:

THAT THE ADVISORY COMMITTEE RECEIVE THE GM REPORT.



MEMO

To: Board Members
From: Peter Bramley, Chief Executive
Date: 20 May 2020
Subject: **FOR INFORMATION**

Status

This report contains:

- For decision
- Update
- Regular report
- For information

Submissions sent on behalf of NMDHB during May are:

- MDC Draft Annual Plan 2020-2021
- NZ Transport Agency – Accessible Streets Consultation

Copies of the submissions are available from the Board Secretary.

GLOSSARY OF COMMONLY USED ACRONYMS, ABBREVIATIONS AND MAORI TRANSLATION

ABC	Ask about their smoking status; brief advice to quit; cessation
A4HC	Action for Healthy Children
A&D / AOD	Alcohol and Drug / Alcohol and Other Drugs
A&R	Audit & Risk Committee
ACC	Accident Compensation Corporation
ACMO	Associate Chief Medical Officer
ACNM -	Associate Charge Nurse Manager
ACU	Ambulatory Care Unit
ACP	Advanced Care Plan
ADR	Adverse Drug Reactions
ADM	Acute Demand Management
ADON	Associate Director of Nursing
AE	Alternative Education
AEP	Accredited Employer Programme
AIR	Agreed Information Repository
ALOS	Average Length of Stay
ALT	Alliance Leadership Team (short version of (TOSHALT))
AMP	Asset Management Plan
AOD	Alcohol and Other Drug
AOHS	Adolescent Oral Health Services
AP	Annual Plan with Statement of Intent
ARC	Aged Residential Care
ARF	Audit Risk and Finance
ARCC	Aged Residential Care Contract
ARRC	Aged Related Residential Care
ASD	Autism Spectrum Disorder
ASH	Ambulatory Sensitive Hospitalisation
ASMS	Association of Salaried Medical Specialists
AT&R	Assessment, Treatment & Rehabilitation
BSCQ	Balanced Score Card Quadrant
BA	Business Analyst
BAFO	Best and Final Offer
BAU	Business as Usual
BCP	Business Continuity Plan
BCTI	Buyer Created Tax Invoice
BFCI	Breast Feeding Community Initiative
BFCI	Baby Friendly Community Initiative
BHE	Blenheim
BOT	Board of Trustees
BS	Business Support
BSI	Blood Stream Infection
BSMC	Better, Sooner, More Convenient
CaaG	Capacity at a Glance
CAMHS	Child and Adolescent Mental Health Services
CAPEX	Capital operating costs
CAR	Corrective Action Required
CARES	Coordinated Access Response Electronic Service
CAT	Mental Health Community Assessment Team
CBAC	Community Based Assessment Centres
CBF	Capitation Based Funding
CBSD	Community Based Service Directorate
CE (CEO)	Chief Executive (Chief Executive Officer)

CEA	Collective Employee Agreement
CDHB	Canterbury District Health Board
CCDHB	Capital & Coast District Health Board (also called C & C)
CCDM	Care Capacity Demand Management
CCDP	Care Capacity Demand Planning
CCF	Chronic Conditions Framework
CCT	Continuing Care Team
CCU	Coronary Care Unit
CD	Clinical Director
CDEM	Civil Defence Emergency Management
CDHB	Canterbury District Health Board
CDM	Chronic Disease Management
CEG	Coordinating Executive Group (for emergency management)
CeTas	Central Technical Advisory Support
CFA	Crown Funding Agreement <u>or</u> Crown Funding Agency
CFO	Chief Financial Officer
CGC	Clinical Governance Committee
CHFA	Crown Health Financing Agency
CHS	Community Health Services
CIMS	Coordinated Incident Management System
CIO	Chief Information Officer
CLAB	Central Line Associated Bacteraemia
CLAG	Clinical Laboratory Advisory Group
CME	Continuing Medical Education
CMI	Chronic Medical Illness
CMO	Chief Medical Officer
CMS	Contract Management System
CNM	Charge Nurse Manager
CNS	Charge Nurse Specialist
COAG	Clinical Operations Advisory Group
Concerto	IT system which provides clinician's interface to systems
COHS	Community Oral Health Service
COO	Chief Operating Officer
COPD	Chronic Obstructive Pulmonary Disease
COPMI	Children of Parents with Mental Illness
CPHAC	Community and Public Health Advisory Committee
CPIP	Community Pharmacy Intervention Project
CPNE	Continuing Practice Nurse Education
CP	Chief Pharmacist
CPO	Controlled Purchase Operations
CPSOG	Community Pharmacy Services Operational Group
CPU	Critical Purchase Units
CR	Computed Radiology
CRG	Christchurch Radiology Group
CRISP	Central Region Information Systems Plan
CSR	Contract Status Report
CSSD	Central Sterile Supply Department
CSSD	Clinical Services Support Directorate
CT	Computerised Tomography
CTA	Clinical Training Agency
CTC	Contributions to Cost
CTC	Computerised Tomography Colonography
CTANAG	Clinical Training Agency Nursing Advisory Group
CTU	Combined Trade Unions
CVD	Cardiovascular Disease
CVDRA	Cardiovascular/Diabetes Risk Assessment
CWD	Case Weighted Discharge
CYF	Child, Youth and Family

CYFS	Child, Youth and Family Service
DA	Dental Assistant
DAH	Director of Allied Health
DAP	District Annual Plan
DAR	Diabetes Annual Review
DBI	Diagnostic Breast Imaging
DBT	Dialectical Behaviour Training
DHB	District Health Board
DHBRF	District Health Boards Research Fund
DIFS	District Immunisation Facilitation Services
DiSAC	Disability Support Advisory Committee
DGH	Director General of Health
DMH	Director of Maori Health
DNA	Did Not Attend
DONM	Director of Nursing and Midwifery
DR	Disaster Recovery
DR	Digital Radiology
DRG	Diagnostic Related Group
DSA	Detailed Seismic Assessment
DSP	District Strategic Plan
DSS	Disability Support Services
DT	Dental Therapist
DWCSP	District Wide Clinical Services Plan
EAP	Employee Assistance Programme
EBID	Earnings Before Interest & Depreciation
EBITDA	Earnings Before Interest, Tax Depreciation and Amortisation
ECP	Emergency Contraceptive Pill
ECWD	Equivalent Case Weighted Discharge
ED	Emergency Department
EDA	Economic Development Agency
EDaaG	ED at a Glance
EFI	Energy For Industry
ELT	Executive Leadership Team
EMPG	Emergency Management Planning Group
ENS	Ear Nurse Specialist
ENT	Ears, Nose and Throat
EOI	Expression of Interest
EPA	Enduring Power of Attorney
EQP	Earthquake Prone Building Policy
ERMS	ereferral Management System
ESA	Electronic Special Authority
ESOL	English Speakers of Other Languages
ESPI	Elective Services Patient Flow Indicators
ESR	Environmental Science & Research
ESU	Enrolled Service Unit
EVIDEM	Evidence and Value: Impact on Decision Making
FCT	Faster Cancer Treatment
FF&E	Furniture, Fixtures and Equipment
FFP	Flexible Funding Pool
FFT	Future Funding Track
FMIS	Financial Management Information System
FOMHT	Friends of Motueka Hospital Trust
FOUND	Found Directory is an up-to-date listing of community groups and organisations in Nelson/Tasman
FPSC	Finance Procurement and Supply Chain

FRC	Fee Review Committee
FSA	First Specialist Assessment
FST	Financially Sustainable Threshold
FTE	Full Time Equivalent
FVIP	Family Violence Intervention Programme
GM	General Manager
GMS	General Medical Subsidy
GP	General Practitioner
GRx	Green Prescription
hA	healthAlliance
HAC	Hospital Advisory Committee
H&DC / HDC	Health and Disability Commissioner
H&S	Health & Safety
HBI	Hospital Benchmarking Information
HBSS	Home Based Support Services
HBT	Home Based Treatment
HCS	Health Connect South
HCSS	Home and Community Support Services
HDSP	Health & Disability Services Plan Programme
HDU	High Dependency Unit
HEA	Health Education Assessments
HEAL	Healthy Eating Active Lifestyles
He Kawenata	Covenant, agreement, treaty, testament (PM Ryan Maori Dictionary pg 104)
HEeADSSS	Psychosocial tool – Home, Education, eating, Activities, Drugs and Alcohol, Sexuality, Suicidality (mood), Safety
HEHA	Healthy Eating Healthy Action
HEP	Hospital Emergency Plan
HESDJ	Ministries of Health, Education, Social Development, Justice
HFA	Health Funding Authority
HHS	Hospital and Health Services
HIA	Health Impact Assessment
HM	Household Management
HMS	Health Management System
HNA	Health Needs Assessment
HOD	Head of Department
HOP	Health of Older People
HP	Health Promotion
HPI	Health Practitioner Index
HPV	Human Papilloma Virus
HR	Human Resources
HR & OD	Human Resources and Organisational Development
HSP	Health Services Plan
HQSC	Health Quality & Safety Commission
laaS	Infrastructure as a Service
IANZ	International Accreditation New Zealand
IBA	Information Builders of Australia
IBC	Indicative Business Case
ICU	Intensive Care Unit
IDF	Inter District Flow
IDSS	Intellectual Disability Support Services
IFRS	International Financial Reporting Standards
IHB	Iwi Health Board
ILM	Investment Logic Mapping
IM	Information Management
IMCU	Intermediate Care Unit

InterRAI	Inter Residential Assessment Instrument
IoD	Institute of Directors New Zealand
IPAC	Independent Practitioner Association Council
IPC	Intensive Patient Care
IPC Units	Intensive Psychiatric Care Units
IPG	Immunisation Partnership Group
IPS	Individual Placement Support
IPSAS	International Public Sector Accounting Standards
IPU	In-Patient Unit
IS	Information Systems
ISSP	Information Services Strategic Plan
IT	Information Technology
JAMHWSAP	Joint Action Maori Health & Wellness Strategic Action Plan
JOG	Joint Oversight Group
KIM	Knowledge and Information Management
Kotahitanga	Unity, accord, coalition, solidarity (PM Ryan Maori Dictionary pg 127)
KPI	Key Performance Indicator
KHW	Kimi Hauora Wairau (Marlborough PHO)
LA	Local Authority
LCN	Local Cancer Network
LIS	Laboratory Information Systems
LMC	Lead Maternity Carer
LOS	Length of Stay
LSCS	Lower Segment Caesarean Section
LTC	Long Term Care
LTI	Lost Time Injury
LTIP	Long Term Investment Plan
LTCCP	Long Term Council Community Plan
LTO	Licence to Occupy
LTS-CHC	Long Term Supports – Chronic Health Condition
LTSFSG	Long Term Service Framework Steering Group
Manaakitanga	Goodwill, show respect, or kindness to ((PM Ryan Maori Dictionary pg 172)
Manawhenua	Power, prestige, authority over land (HW Williams Maori Dictionary pg 172)
Manawhenua O Te	Tau Ihu O Te Waka A Maui – Referring to the eight iwi who hold tribal authority over the top of the South Island (no reference)
MA	Medical Advisor
MAC(H)	Medicines Advisory Group (Hospital)
MAPA	Management of Actual and Potential Aggression
MAPU	Medical Admissions Planning Unit
MCT	Mobile Community Team
MDC	Marlborough District Council
MDM	Multidisciplinary Meetings
MDM	Multiple Device Management
MDO	Maori Development Organisation
MDS	Maori Development Service
MDT	Multi Disciplinary Team
MECA	Multi Employer Collective Agreement
MEND	Mind, Exercise, Nutrition, Do It
MH&A	Mental Health & Addiction Service
MHAU	Mental Health Admission Unit
MHC	Mental Health Commissioner
MHD	Maori Health Directorate
MHDSF	Maori Health and Disability Strategy Framework
MHFS	Maori Health Foundation Strategy

MHINC	Mental Health Information Network Collection
MHSD	Mental Health Service Directorate
MHWSF	Maori Health and Wellness Strategic Framework
MI	Minor Injury
MIC	Medical Injury Centre
MMG	Medicines Management Group
MOC	Models of Care
MOE	Ministry of Education
MOH	Ministry of Health
MOH	Medical Officer of Health
MOA	Memorandum of Agreement
MOSS	Medical Officer Special Scale
MOU	Memorandum of Understanding
MOW	Meals on Wheels
MPDS	Maori Provider Development Scheme
MQ&S	Maternity Quality & Safety Programme
MRI	Magnetic Resonance Imaging
MRSA	Methicillin Resistant Staphylococcus Aureus
MRT	Medical Radiation Technologist (or Technician)
MSD	Ministry of Social Development
MTI	Minor Treatment Injury
NMH	Nelson Marlborough Health (NMDHB)
NP	Nurse Practitioner
NPA	Nutrition and Physical Activity
NRAHDD	Nelson Region After Hours & Duty Doctor Limited
NRL	Nelson Radiology Ltd (Private Provider)
NRT	Nicotine Replacement Therapy
NHBIT	National Health Board IT
NASC	Needs Assessment Service Coordination
NBPH	Nelson Bays Primary Health
NCC	National Capital Committee
NCC	Nelson City Council
NCSP	National Cervical Screening Programme
NESP	Nurse Entry to Specialist Practice
NETP	Nurse Entry to Practice
NGO	Non Government Organisation
NHCC	National Health Coordination Centre
NHI	National Health Index
NIR	National Immunisation Register
NM	Nelson Marlborough
NMDHB	Nelson Marlborough District Health Board
NMDS	National Minimum Dataset
NMH	Nelson Marlborough Health
NMIT	Nelson Marlborough Institute of Technology
NN	Nelson
NOF	Neck of Femur
NOS	National Oracle Solution
NP	Nurse Practitioner
NPA	Nutrition and Physical Activity (Programme)
NPV	Net Present Value
NRAHDD	Nelson Regional After Hours and Duty Doctor Ltd
NRSII	National Radiology Service Improvement Initiative
NSU	National Screening Unit
NTOS	National Terms of Settlement
NZHIS	NZ Health Information Services
NZISM	New Zealand Information Security Manual
NZMA	New Zealand Medical Association

NZNO	NZ Nurses Organisation
NZPH&D Act	NZ Public Health and Disability Act 2000
OAG	Office of the Auditor General
OECD	Organisation for Economic Co-operation and Development
OIA	Official Information Act
OIS	Outreach Immunisation Services
OPD	Outpatient Department
OPEX	Operating costs
OPF	Operational Policy Framework
OPJ	Optimising the Patient Journey
OPMH	Older Persons Mental Health
OST	Opioid Substitution Treatment
ORL	Otorhinolaryngology (previously Ear, Nose and Throat)
OSH	Occupational Health and Safety
OT	Occupational Therapy
PACS	Picture Archiving Computer System
PAS	Patient Administration System
P&F	Planning and Funding
P&L	Profit and Loss Statements
PANT	Physical Activity and Nutrition Team
PBF(F)	Population Based Funding (Formula)
PC	Personal Cares
P&C	Primary & Community
PCBU	Person Conducting Business Undertaking
PCI	Percutaneous Coronary Intervention
PCO	Primary Care Organisation
PCT	Pharmaceutical Cancer Treatments
PDO	Principal Dental Officer
PDR	Performance Development Review
PDRP	Professional Development and Recognition Programme
PDSA	Plan, Do, Study, Act
PFG	Performance Framework Group (formerly known as Services Framework Group)
PHS	Public Health Service
PHCS	Primary Health Care Strategy
PHI	Public Health Intelligence
PHO	Primary Health Organisation
PHOA	PHO Alliance
PHONZ	PHO New Zealand
PHS	Public Health Service
PHU	Public Health Unit
PIA	Performance Improvement Actions
PICS	Patient Information Care System
PIP	Performance Improvement Plan
PN	Practice Nurse
POCT	Point of Care Testing
PPE	Property, Plant & Equipment assets
PPP	PHO Performance Programme
PRIME	Primary Response in Medical Emergency
PSAAP	PHO Service Agreement Amendment Protocol
PSR	Preschool Enrolled (Oral health)
PT	Patient
PTAC	Pharmacology and Therapeutics Committee
PTCH	Potential To Cause Harm
PRG	Pacific Radiology Group
PRIMHD	Project for the Integration of Mental Health Data

PVS	Price Volume Schedule
Q&SGC	Quality & Safety Governance Committee
QA	Quality Assurance
QHNZ	Quality Health NZ
QIC	Quality Improvement Council
QIPPS	Quality Improvement Programme Planning System
QSM	Quality Safety Measures
RA	Radiology Assistant
Rangatiratanga	Autonomy, evidence of greatness (HW Williams Maori Dictionary pg 323)
RCGPs	Royal College of General Practitioners
RDA	Resident Doctors Association
RDA	Riding for Disabled
RIF	Rural Innovation Fund
RIS	Radiology Information System
RFI	Request for Information
RFP	Request for Proposal
RICF	Reducing Inequalities Contingency Funding
RIS	Radiology Information System
RM	Registered Midwife
RMO	Resident Medical Officer
RN	Registered Nurse
ROI	Registration of Interest
RSE	Recognised Seasonal Employer
RSL	Research and Sabbatical Leave
RTLB	Resource Teacher: Learning & Behaviour
SAC1	Severity Assessment Code
SAC2	Severity Assessment Code
SAN	Storage Area Network
SCBU	Special Care Baby Unit
SCL	Southern Community Laboratories
SCN	Southern Cancer Network
SDB	Special Dental Benefit Services
SHSOP	Specialist Health Services for Older People
SI	South Island
SIA	Services to Improve Access
SIAPO	South Island Alliance Programme Office
SICF	South Island Chairs Forum
SICSP	South Island Clinical Services Plan
SI HSP	South Island Health Services Plan
SI-PICS	South Island Patient Information Care System
SIRCC	South Island Regional Capital Committee
SISSAL	South Island Shared Service Agency
SLA	Service Level Agreement
SLATs	Service Level Alliance Teams
SLH	SouthLink Health
SM	Service Manager
SMO	Senior Medical Officer
SNA	Special Needs Assessment
SOI	Statement of Intent
SOPD	Surgical Outpatients Department
SOPH	School of Population Health
SPaIT	Strategy Planning and Integration Team
SPAS	Strategy Planning & Alliance Support
SPE	Statement of Performance Expectations
SSBs	Sugar Sweetened Beverages

SSE	Sentinel and Serious Events
SSP	Statement and Service Performance
SUDI	Sudden Unexplained Death of an Infant
TCR	Total Children Enrolled (Oral health)
TDC	Tasman District Council
TLA	Territorial Local Authority
TOW	Treaty of Waitangi
TOR	Terms of Reference
ToSHA	Top of the South Health Alliance
TPO	Te Piki Oranga
TPOT	The Productive Operating Theatre
UG	User Group
USS	Ultrasound Service
U/S	Ultrasound
VLCA	Very Low Cost Access
VRA	Vascular Risk Assessment
WAM	Wairau Accident & Medical Trust
WAVE (Project)	Working to Add Value through E-Information
WEII	Whanau Engagement, Innovation and Integration
WIP	Work in Progress
WR	Wairau
YOTS	Youth Offending Teams
YTD	Year to Date
YTS	Youth Transition Service

As at August 2019